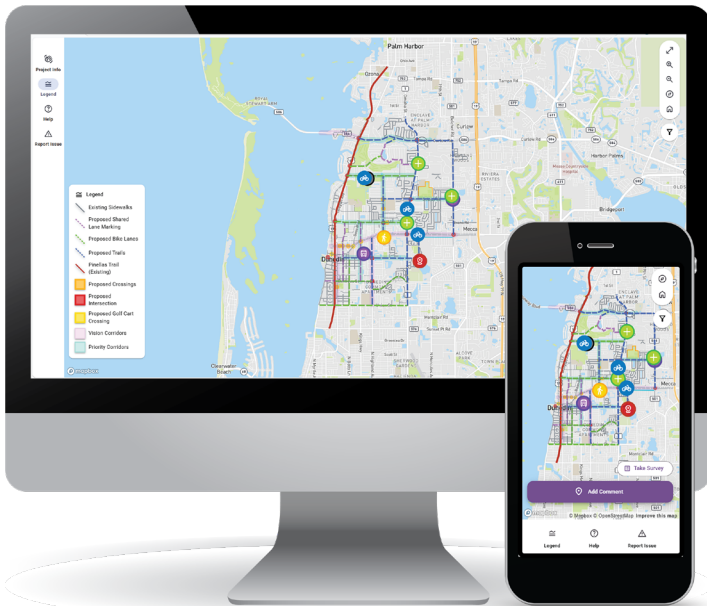




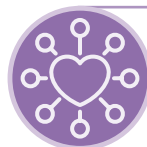
Engagement that exceeds expectations

PublicCoordinate is an interactive community engagement platform that allows public agencies and developers to communicate and visualize project information, collect valuable public input, and make data-informed decisions based on real-time information. The platform offers highly customizable and user-friendly mapping capabilities to inform stakeholders and integrated survey options to gather deeper insights to streamline the decision-making process.



CUSTOM MAP INTERFACE:

Display project information with tailored functional and interactive mapping capabilities



COMMUNITY & STAKEHOLDER FOCUSED:

Promote collaborative project development with a public feedback-centered approach



INFORMED DECISION MAKING:

Put stakeholder voices at the heart of planning processes to make well-informed decisions



ACCESSIBILITY FOR ALL:

Designed to be usable and reachable to all populations for broader stakeholder involvement

Suitable for all public engagement needs, from simple community outreach and feedback to complex multi-phase projects



PublicCoordinate

Engagement that exceeds expectations

Why PublicCoordinate?



GAIN DEEPER STAKEHOLDER INSIGHT

Overcome engagement and communication barriers by providing an easy-to-use platform that is informative and encourages stakeholder participation.



SHOWCASE PROJECT INFORMATION

Resolve challenges with transparency and gain stakeholder trust by creating tailored webpages that display important project details and house integrated surveys, to ensure comprehensive feedback.



MAKE DATA-DRIVEN DECISIONS

Gather feedback from multiple integrated sources and seamlessly analyze data for streamlined decision-making.



EASILY DIRECT THE COMMUNITY

Conquer accessibility obstacles by offering an adaptable platform that is able to adjust to a population's unique needs.

Reach Out Today:

Visit our [website](#) or email us at info@publiccoordinate.com to get more information about how PublicCoordinate can help make public engagement simple, streamlined, and accessible.

Scan to
Learn More

