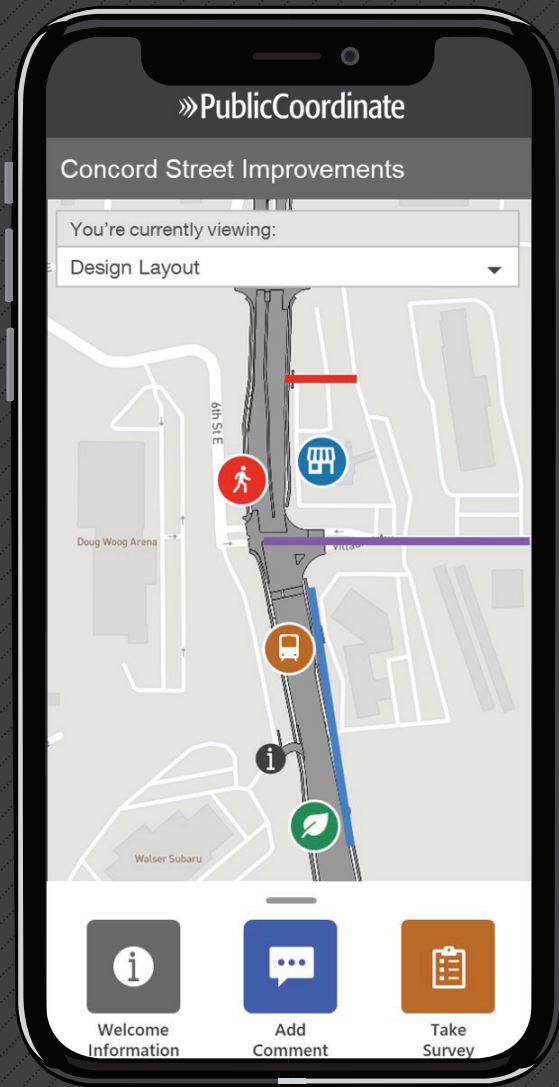


# »» PublicCoordinate

*Leverage diverse perspectives to guide your project to success.*

**PublicCoordinate** shares project information with the public and gathers comments/feedback online and interactively in a user-friendly map-based platform.



## PUBLIC-FRIENDLY

- » Map text can be translated to multiple languages
- » Customizable welcome text box provides instructions to map users
- » Mobile-, tablet-, and desktop-friendly interface
- » Meets web accessibility guidelines that state and federal agencies are required to adhere to, unlike most other platforms

## SECURE

- » Optional email address requirement in order to post a comment to prevent spam comments
- » Built-in prohibited words list restricts the usage of inappropriate words in the comments

## CUSTOMIZABLE

- » Offers multiple comment types, including point-specific comments and drawing a route
- » Integrates seamlessly with SurveyMonkey to display custom surveys within the map sidebar
- » Provides the ability to toggle between multiple underlying base maps including aerial, street, and custom base maps
- » Custom branding to show project/client logos and display the project name

## EFFICIENT

- » Provides the ability to toggle between multiple project alternatives/phases in one map and automatically assigns comments to specific project alternative/phase
- » Exports formatted reports on activity and comments with summary analytics on comments and types



# WHY PublicCoordinate



## ACCESSIBILITY

It provides more features than most interactive mapping platforms, such as meeting ADA web accessibility and language translation



## IN-HOUSE SUPPORT

Since Kimley-Horn develops and maintains the mapping software, it is reliable and any issues that arise can be resolved quickly



## STREAMLINED PROCESS

Thanks to integrated survey and comment exporting features, the process for soliciting and summarizing public feedback is easy and streamlined



## FULLY CUSTOMIZABLE

If there is a feature the map doesn't provide, it can be customized to meet client requests



## AFFORDABLE

PublicCoordinate is more affordable and efficient than many other mapping tools



## WHEN SHOULD I USE PublicCoordinate?

This map can be used for a wide variety projects and is a great tool whether you seek to solicit input on a municipal project with multiple alternatives or share development information on a private project.

Common uses include seeking input on:



Existing conditions for a project area



Project goals and site constraints before a design has been determined



Preliminary design phase with one or multiple alternatives



Construction plans/phasing



Final design



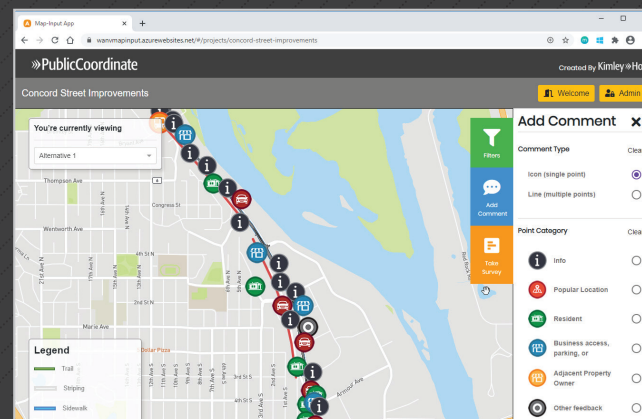
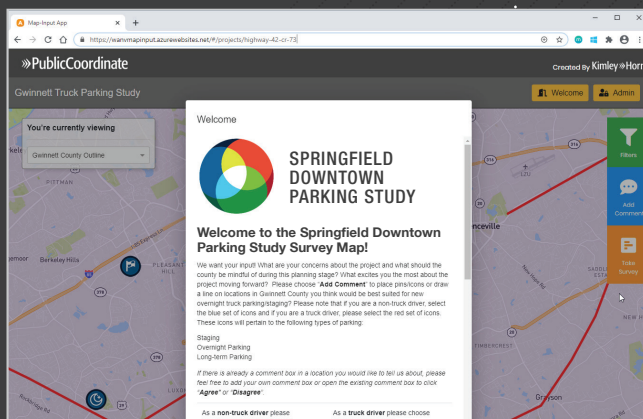
Transit corridor project



Long-range, regional, or statewide plans



Project planning



EMAIL

[admin@publiccoordinate.com](mailto:admin@publiccoordinate.com)  
for more information!

[WWW.PUBLICCOORDINATE.COM](http://WWW.PUBLICCOORDINATE.COM)

PublicCoordinate Kimley-Horn